

The Big Trees of St. Joseph County

Trees eligible for nomination

- | | |
|---|--|
| Ash.....
Blue
Black
Green
White | Hophornbeam, Eastern
Hornbeam, American |
| Aspen.....
Bigtooth
Quaking | Juneberry
Kentucky coffeetree |
| Basswood, American | Locust.....
Black |
| Beech, American | Honey |
| Birch.....
River
Yellow
Gray | Maple.....
Boxelder
Black
Red
Silver
Sugar |
| Black gum | Mulberry, Red |
| Buckeye, Ohio | Oak.....
Black
Bur
Chinquapin |
| Butternut | Jack
Pin |
| Eastern red cedar | Red |
| Cherry.....
Black
Pin | Scarlet
Shingle
Swamp white
White |
| Balsam poplar | Pawpaw |
| Cottonwood.....
Eastern
Swamp | Pine, Eastern white |
| Dogwood, Flowering | Plum, American |
| Elm.....
American
Rock
Slippery | Redbud |
| Hackberry | Sassafras |
| Hawthorn.....
Cockspur
Dotted
Downy | Sycamore |
| Hickory.....
Bitternut
Mockernut
Pignut
Red
Shagbark
Shellbark | Tamarack |
| | Tulip |
| | Walnut, Black |
| | Willow.....
Black
Peachleaf |

The Big Trees of St. Joseph County is coordinated by St. Joseph County Parks— Interpretive Services Division



Help find the BIGGEST trees in St. Joseph County

Nominate a tree near you!

printed on recycled paper

Help find the Big Trees of St. Joseph County

Join in the fun... Find the biggest trees in St. Joseph County. Certificates are awarded to the owners and nominators of each champion tree. And, every 2 to 3 years the printed listing of county champion trees is updated, so we are always looking for **bigger trees!**

To nominate a tree, it must be...

- a living tree growing within the county
 - a native tree species for our county
- Ornamentals are excluded. A list of eligible species is included on the back of this brochure.

If you need assistance identifying your tree

Bring a twig with leaves to -

- Bendix Woods County Park in New Carlisle, 574/654-3155
- Rum Village Nature Center in South Bend, 574/235-9455
- Soil and Water Conservation Office in South Bend, 574/291-2300

We suggest pressing the twig between the pages of heavy books so the leaves do not curl as they dry. If the naturalists are unavailable when you drop off your specimen, please leave your name and number so they can get back to you.

Submitting your entry

When you have found your Big Tree entry, fill out the attached nomination form and mail it to St. Joseph County Parks, 32132 SR 2, New Carlisle, IN 46552 - Attn: Big Trees. Your nomination will be confirmed by post card.

If it is close to being a county champion, a park interpreter or other natural resource professional will come to confirm the measurements of the tree in the fall.

Your tree may qualify for state recognition

The Big Trees of St. Joseph County follows the same rules as the Indiana State Big Tree Program administered by the DNR. All county champions will be compared to the current state champion list for possible submission.

Make your own tree measuring stick

For information on how to make a simple tree measuring stick, contact St. Joseph County Extension Office, 574/235-9604. Ask for booklet FNR-4.

The Big Trees of St. Joseph County
is a cooperative program of:

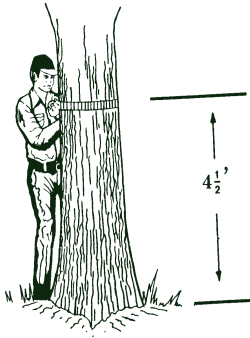
St. Joseph County Parks
Purdue Extension: St. Joseph County
St. Joseph County Soil and Water District
Rum Village Nature Center
The University of Notre Dame
Department of Biological Sciences

How to Measure Your Entry

To complete the nomination form you must include basic measurements of your tree.

Measuring the circumference

Use a tape measure or string to measure the girth or circumference of the tree in inches, 4 1/2 feet off the ground. If the tree has a divided trunk at that height, measure the circumference below the split. If the tree is on a slope, measure from the uphill side.



Determining average crown spread

Walk beneath the tree to determine where the crown is widest. Mark the crown's edge on the ground and measure the distance to the far edge of the crown, passing along the base of the tree. Do the same for the narrowest spread of the crown. Remember, the crown spread passes in a straight line through the center of the tree. Add the two distances and divide the sum by 2 to obtain the average width of the tree's crown.

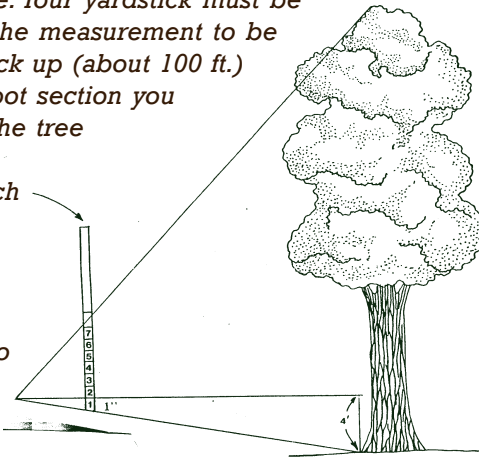


Measuring the height

With ribbon, yarn or masking tape, mark a visible spot on the tree trunk 4 feet from the ground.

Hold a yardstick vertically, at a comfortable arm's distance and back away from the tree. Your yardstick must be straight for the measurement to be accurate. Back up (about 100 ft.)

until the 4 foot section you marked on the tree occupies exactly 1 inch on your yardstick. Without moving the stick, sight to the base of the tree and then to the top of the tree to determine how many inches the tree height occupies on the yardstick. Multiply the number of inches by 4 to determine your tree's height in feet.



How do we determine champions?

A point value is assigned to your tree using the following formula: the circumference in inches, plus the height in feet, plus 1/4 of the average crown spread. This point value is compared to other nominations for the same tree species. If your nomination is in contention for a county record we will come out to verify the tree's measurements.

The Big Trees of St. Joseph County—Nomination Form

Return to: Big Trees, c/o St. Joseph County Parks, 32132 SR 2, New Carlisle, IN 46552
574/654-3155 Fax: 574/654-3674

Entries are due September 1, to be eligible for the current listing. You may nominate more than one tree, however each entry must be on a separate form.

Tree species (common name, be specific) _____

Scientific name, if known _____

Nearest street address and town of tree location _____

Is the tree visible from the road? YES NO

Name of nominator _____ Daytime phone _____

Address _____ City _____ Zip _____

Email address _____

Name of owner _____ Daytime phone _____

Address _____ City _____ Zip _____

If different from nominator, is the owner aware you are nominating this tree? YES NO

Has the owner given permission for the public to view the tree? YES NO

Tree Dimensions

Circumference at 4 1/2 feet _____ inches Height _____ ft. _____ in.

Average Crown Spread in inches _____ inches Date measured _____

Condition of tree when measured _____

A slide or photo of your tree would be extremely helpful. For emailing digital photos, call us at 574-654-3155.

Please enclose a map of the location of the tree. (The map may be hand drawn, as long as its legible.)

Staff Use: Date Received _____ Verified by _____ Point Index _____



St. Joseph County
Soil & Water Conservation
District



Purdue Extension
St. Joseph County

RUM
VILLAGE



NATURE
CENTER

The University
of Notre Dame
Department of
Biological Sciences